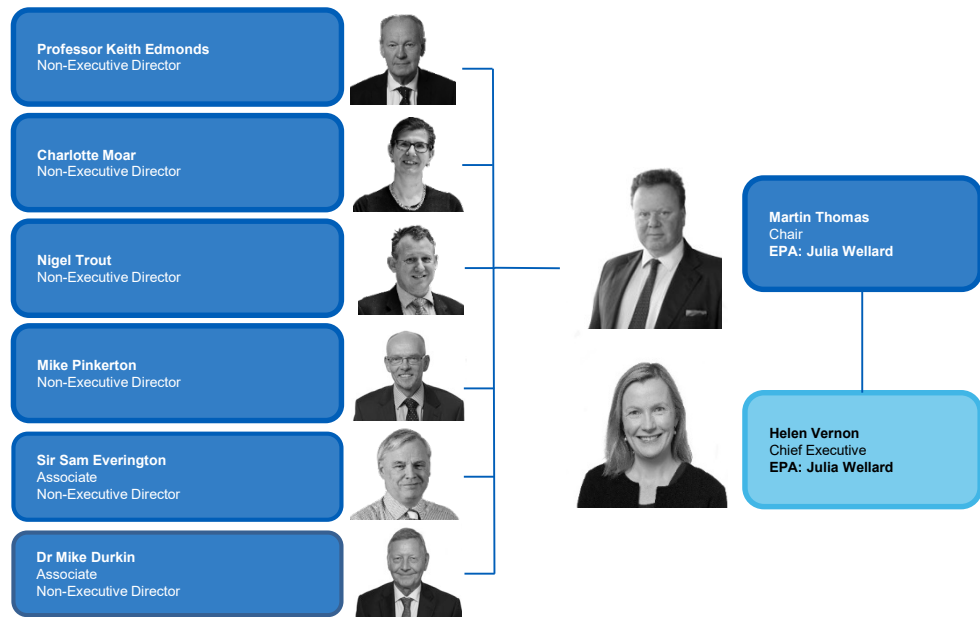


NHS Resolution organisational chart and administrative bases



Resolution



NHS Resolution
 8th Floor
 10 South Colonnade
 Canary Wharf, London
 E14 4PU
 Tel: 020 7811 2700
 Website: www.resolution.nhs.uk

**NHS Resolution Leeds
 (Primary Care Appeals service
 formerly FHSAU)**
 Arena Point
 Merrion Way
 Leeds
 LS2 8PA
 Tel: 020 3928 2000

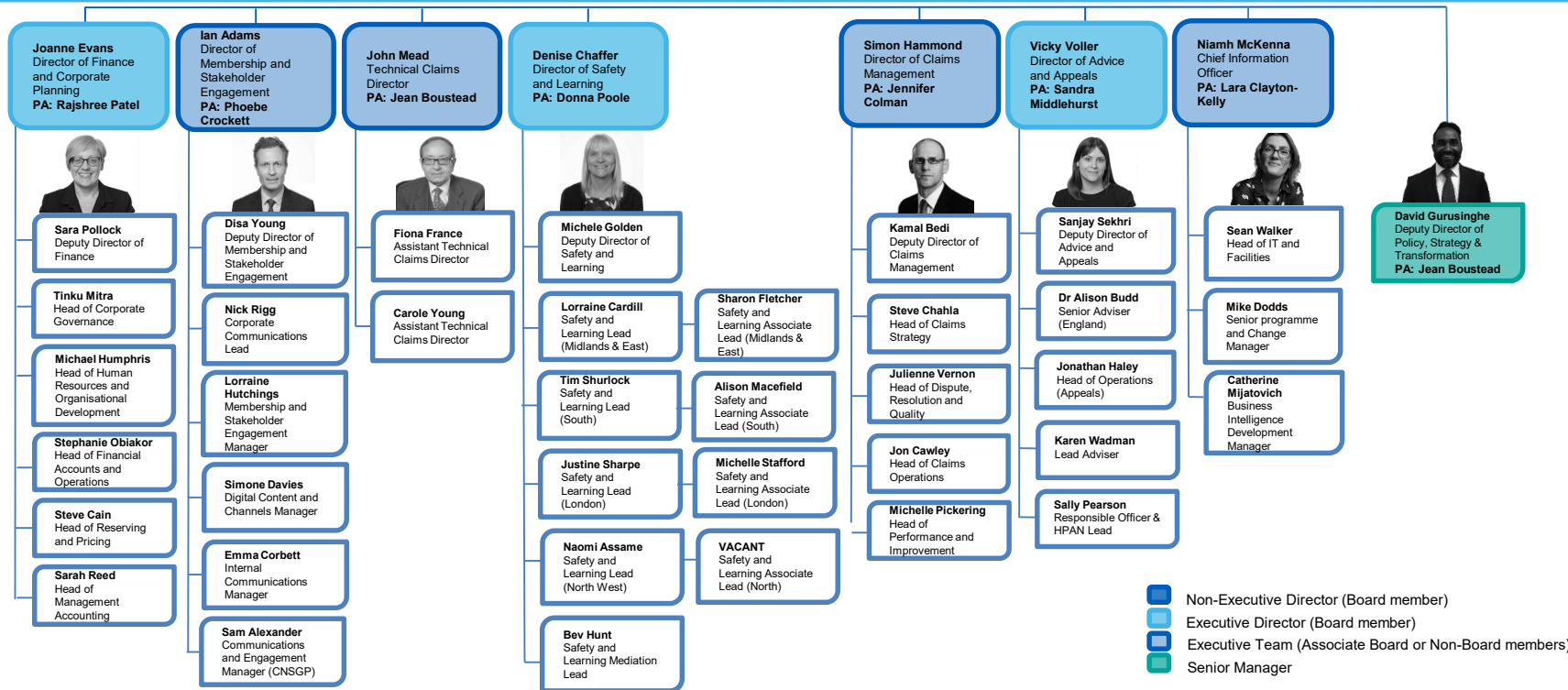
- Non-Executive Director (Board member)
- Executive Director (Board member)
- Executive Team (Associate Board or Non-Board members)
- Senior Manager

Updated July 2021

NHS Resolution organisational chart and administrative bases



Resolution



- Non-Executive Director (Board member)
- Executive Director (Board member)
- Executive Team (Associate Board or Non-Board members)
- Senior Manager

Updated July 2021